



# PIMCO Managed Core Bond Pool



Quarterly Investment Report | 1Q24

## **IMPORTANT NOTICE**

Please note that this material contains the opinions of the manager as of the date noted, and may not have been updated to reflect real time market developments. All opinions are subject to change without notice.

# Executive summary

## Portfolio Performance

Over the quarter, the Managed Core Bond Pool generated positive returns. Exposures to securitized, investment grade, and high yield credit contributed to performance along positions in EM spread strategies. However, this was slightly offset by positions in U.S. and Canadian duration as well as exposure to EM local debt, which detracted from performance.

### CONTRIBUTORS

- Exposure to securitized credit
- Exposure to investment grade and high yield corporate credit spread
- Exposure to emerging market spreads

### DETRACTORS

- Positions in U.S. duration
- Positions in Canadian duration
- Exposure to emerging markets local debt

Performance periods ended 31 Mar '24	3 mos.	6 mos.	1 yr.	3 yrs.	SI
Fund before admin fees	0.73	7.35	6.17	0.75	1.26
Fund after admin fees	0.46	6.77	5.02	-0.34	0.17
Benchmark*	-0.14	5.52	3.33	-1.70	-1.02

*Commissions, trailing commissions, management fees and expenses all may be associated with mutual fund investments. Please read the prospectus before investing. The indicated rates of return are the historical annual compounded total returns including changes in unit value and reinvestment of all dividends and does not take into account sales, redemption, distribution or optional charges or income taxes payable by any security holder that would have reduced returns. Mutual funds are not guaranteed, their values change frequently and past performance may not be repeated.*

## Portfolio strategy

- The Managed Core Bond Pool seeks to diversify its exposures globally across regions and sectors to improve portfolio outcomes across market environments.
- The Fund's yield is sourced from a more diversified mix of high-quality sectors including mortgages, corporates, and select EM exposures, which also provides for a more balanced approach across duration and credit risks.
- We are cautious on generic corporate credit and believe that the recent tightening in credit spreads reduces opportunity and has an asymmetric potential for spreads to widen further. Instead, we believe we can find better opportunities within securitized fixed income, senior global financials, and provincials which offer attractive yields given their level of risk.
- In global markets, we seek tactical opportunities that provide attractive risk-reward profiles and the ability to diversify sources of return. We are tactically overweight to select emerging market Latin American currencies given strong technical and fundamental characteristics

\*Bloomberg Global Aggregate (CAD Hedged) Index

\*\*As of 31/12/2023. Management expense ratio is based on total expenses, including the management fee, (excluding commissions and other portfolio transaction costs) for the stated period and is expressed as an annualized percentage of daily average net asset value during the period. \*\*\*The Annual Management Fee is used to pay for investment management services and general administration of the fund, this fee does not include taxes. \*\*\*\*Yield to Maturity (YTM) is the estimated total return of a bond if held to maturity. YTM accounts for the present value of a bond's future coupon payments. Refer to the Important Disclosures at the conclusion of this report for additional important information

Series:	A
Inception date:	14 Feb '20
Fund assets (in CAD millions):	CAD1,341.57
Series A MER:**	1.190%
Series A management fee:***	1.090%

Summary information	31 Mar '24
Estimated yield to maturity (Gross of fee)****	5.56%
Effective duration (yrs)	4.63
Benchmark duration - provider (yrs)	6.66
Benchmark duration - PIMCO (yrs)	6.58
Effective maturity (yrs)	7.35
Average coupon	4.31%
Pool allocation (MV%) <sup>1</sup>	31 Dec '23
PIMCO MONTHLY INCOME FD (CAD) CLS I	48.61
PIMCO CANADIAN TOTL RETRN BD FD CLS I	22.74
PIMCO IG FUND (CA) CLASS I	14.84
PIMCO GLBL ADV STRT BD FD (CAD) CLS I	10.86
PIMCO UNCONSTRAINED BD FD (CAD) CLASS I	1.98

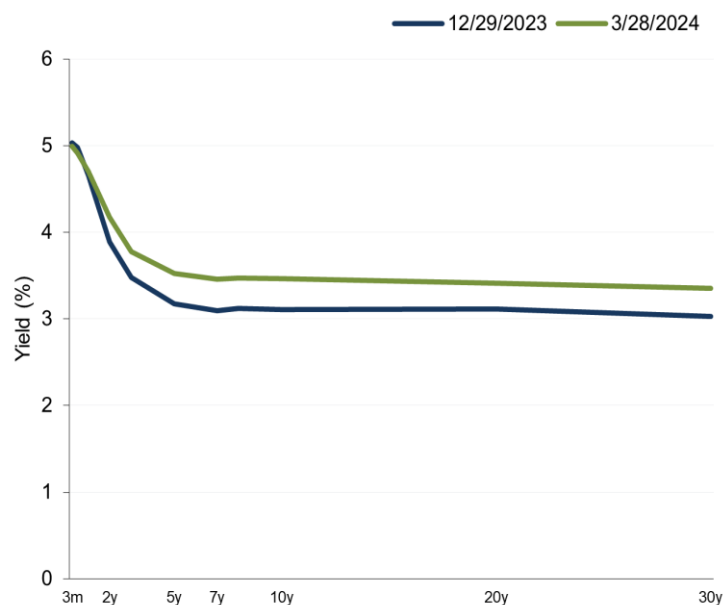
<sup>1</sup>Portfolio holdings disclosed after 60 day reporting lag from most recent quarter end.

# Quarter in Review

## Expectations for rate cuts delayed to the Summer as Canada cools and the U.S. heats up.

Both the Fed and BoC held their policy rates in the quarter as expectations for rate cuts were pushed back to the Summer. Canadian CPI exhibited a more than expected cooling with February data showing a 2.8% year-over-year change, marking the second month in a row where inflation stayed within the BoC's 1-3% target. The U.S. economy continued to show signs of resilience amid better-than-expected growth and employment data, accompanied by higher-than-expected inflation. Hot economic indicators in the U.S. may largely be due to their fixed rate mortgage environment which likely dampened the full impact of a higher rates while Canadian policymakers grapple with a more rate-sensitive economy.

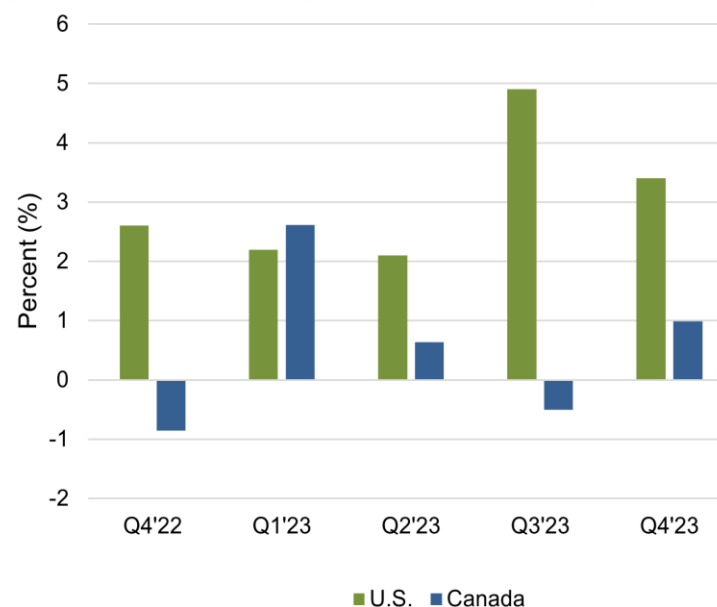
Government of Canada Yield Curve



Canadian yields broadly rose over the quarter. The Canadian 2-yr yield rose by 29 bps in the period to finish the quarter at 4.18%. Meanwhile the 10-yr and 30-yr yield fell by 36 bps and 32 bps, respectively, ending the quarter at 3.47% and 3.35%.

Source : Bloomberg

Canadian and U.S. Real GDP (quarter over quarter seasonally adjusted annualized %)



The Canadian November CPI showed a higher-than-expected 3.1% annual change. Despite adding 25,000 jobs, unemployment rose to 5.8%, reflecting the impact of high levels of immigration. Q3 GDP shrank at an annualized rate of -1.10%, with October showing little change.

Source: Bloomberg

# Market Summary

## Q1 '24: Diverse alpha drivers drove outperformance in the first quarter.

The Fund's exposures to securitized, IG and HY credit along with positions in EM spread strategies contributed to performance, while positions in U.S. & Canadian duration and exposure to EM local debt detracted from performance.

### Developed market debt

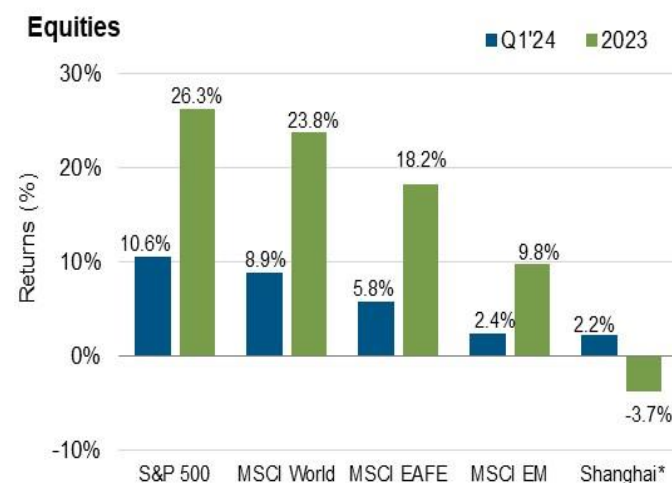
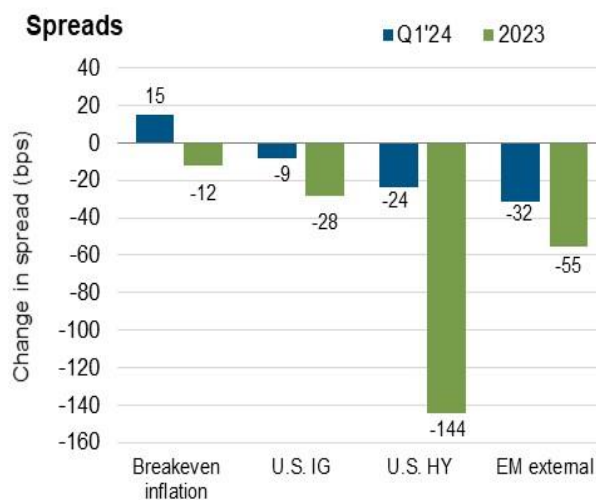
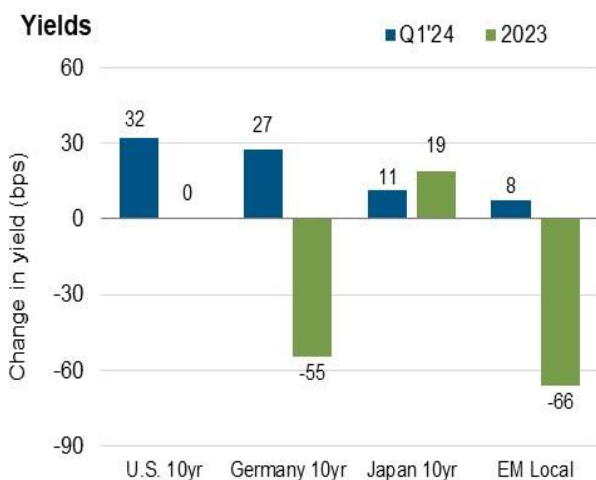
Yields rose broadly across developed markets as inflation remained firm and economic activity robust, particularly in the U.S. While central banks generally held policy rates steady, including in the U.S., U.K., and Europe, dovish remarks from officials bolstered risk sentiment even as investors adjusted expectations for rate cuts in 2024. In Japan, the BoJ hiked rates for the first time in 17 years, ending its negative interest rate policy.

### Credit

U.S. investment grade credit spreads tightened 8 bps, ending the quarter at 85 bps. The sector returned -0.41%, outperforming like-duration treasuries by 0.83%. Credit spreads continued to tighten amid strong earnings results and heavy issuance to start the year.

### Equities

Developed market equities rose 8.9% in the first quarter of 2024 driven by optimism around interest rate cuts, easing inflationary pressures, and economic growth.



Source: U.S. 10yr, Germany 10yr, Japan 10yr, Breakeven inflation (Bloomberg); EM local (JPMorgan GBI-EM Global Diversified Composite Yield to Maturity Index); U.S. investment grade credit (Bloomberg U.S. Credit Index); U.S. high yield credit (ICE BofA High Yield Constrained Index); EM external (JPMorgan Emerging Bond Index Global Sovereign Spread); S&P 500 (S&P 500 Total Return Index); MSCI EAFE (MSCI EAFE Net Total Return USD Index); MSCI EM (MSCI Emerging Net Total Return USD Index); \*Shanghai (Shanghai Stock Exchange Composite Index).

1: Bloomberg US Credit Index

2: MSCI World Index

## Investment implications: Opportune time to consider going active in global fixed income

---

### Look global

Greater-than-usual focus on bond markets outside of the U.S.

### Lock in elevated yields

Intermediate maturities can offer a “sweet spot” with markets expecting cash rates to fall

### Favor high quality

Up-in-quality bias in both public and private credit markets

### Go active

Differentiated macro paths present compelling opportunities for active investors

# Portfolio Outlook

## Strategic Outlook

Higher savings balances and a slower pass-through of monetary policy in the U.S. relative to other developed markets could, in our view, keep inflation above the Fed's 2% target over the cyclical horizon. We still expect the Fed to start normalizing policy at midyear, similar to other DM central banks; however, the Fed's subsequent rate-cutting path could be more gradual. Additionally, we believe that an economic soft landing is achievable, but both recessionary and inflationary risks remain elevated in the aftermath of unprecedented global shocks to supply and demand.

## Key strategies

### Duration

We are constructive on duration with a preference for Canada over the U.S. and a bias for the belly of the curve. The portfolio has a modest steepening bias given the possibility for more aggressive than expected rate cuts in Canada and the re-emergence of term premium.

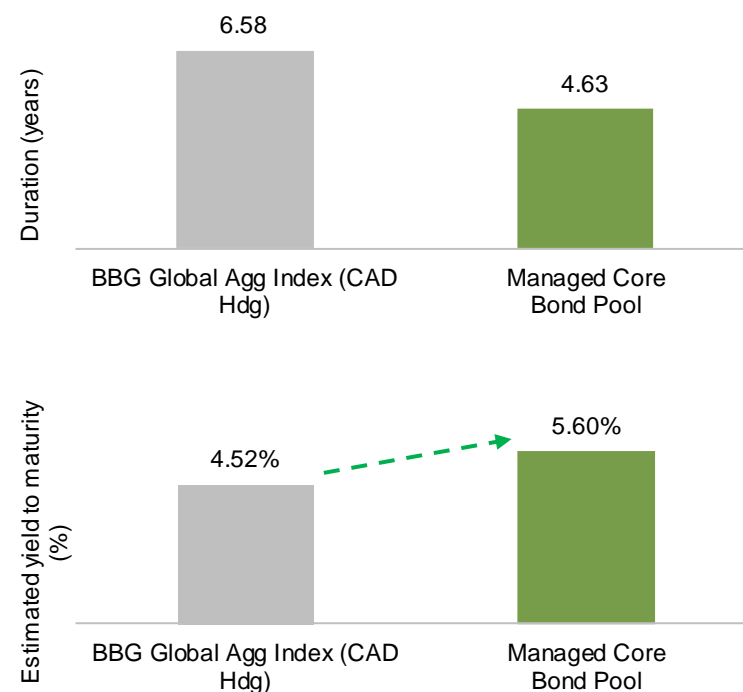
### Spread Sector Strategies

We remain cautious on generic corporate credit which may underperform in scenarios involving an economic downturn. Instead, we prefer a selective approach, seeing value in Canadian provincials given their attractive spreads given their perceived level of risk. We also remain constructive on high quality securitized credit which offer high quality asset protection combined with a strong yield profile.

### Currency Positioning

We remain tactical in currency exposure to countries that have strong fundamentals and offer the potential for higher yield and diversification.

## Key portfolio characteristics



Source: PIMCO. Yield to Maturity (YTM) is the estimated total return of a bond if held to maturity. YTM accounts for the present value of a bond's future coupon payments. PIMCO calculates a Fund's Estimated YTM by averaging the YTM of each security held in the Fund on a market-weighted basis. PIMCO pulls each security's YTM from PIMCO's Portfolio Analytics database. In general, the calculation will incorporate the yield based on the notional value of all derivative instruments held by a Fund. The measure does not reflect the deduction of fees and expenses and is not necessarily indicative of the Fund's actual performance. A portfolio's actual yield or distribution rate may be significantly lower than its estimated YTM in practice. Also, estimated YTM is not intended to indicate that a portfolio will actually hold any or all of its portfolio securities to maturity in practice, and various securities may be sold or otherwise disposed of prior to maturity. Estimated YTM is not a projection or prediction of the actual yield or return that a portfolio may achieve or any other future performance results. There can be no assurance that a portfolio will achieve any particular level of yield or return and actual results may vary significantly from estimated YTM.

# Sector exposure

	Portfolio			
	% Duration		Duration in years	
	31 Dec '23	31 Mar '24	31 Dec '23	31 Mar '24
<b>Government Related</b>	25.86	21.20	1.20	0.98
<b>Securitized*</b>	39.81	44.15	1.85	2.04
Agency Mortgages	28.01	31.96	1.30	1.48
Non-Agency Mortgages	11.50	11.91	0.53	0.55
Asset-Backed Securities	0.29	0.29	0.01	0.01
<b>Investment Grade Credit</b>	25.08	26.57	1.17	1.23
<b>High Yield Credit</b>	1.70	1.60	0.08	0.07
<b>EM External</b>	2.19	2.51	0.10	0.12
<b>EM Local</b>	0.35	0.17	0.02	0.01
<b>Other***</b>	5.56	4.91	0.26	0.23
<b>Net Other Short Duration Instruments****</b>	-0.55	-1.11	-0.03	-0.05
<b>Total</b>	<b>100</b>	<b>100</b>	<b>4.65</b>	<b>4.63</b>

\*Securitized includes Agency MBS, non-Agency MBS, CMBS, ABS, CDO, CLO, and Pooled Funds.

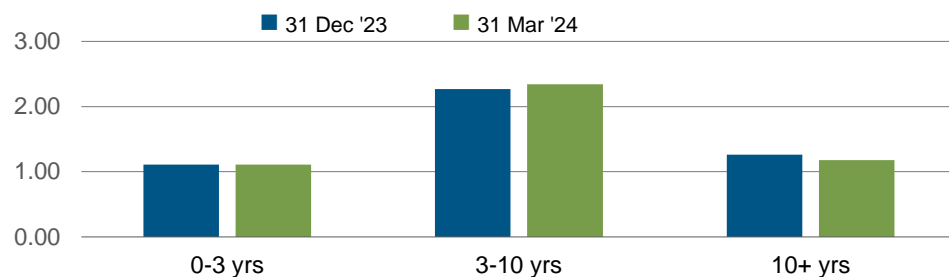
\*\*\*Investment vehicles not listed, allowed by prospectus.

\*\*\*\*Net Other Short Duration Instruments includes securities and other instruments (except instruments tied to emerging markets by country of risk) with an effective duration less than one year and rated investment grade or higher or, if unrated, determined by PIMCO to be of comparable quality, commingled liquidity funds, uninvested cash, interest receivables, net unsettled trades, broker money and derivatives offset. With respect to certain categories of short duration securities, the Adviser reserves the discretion to require a minimum credit rating higher than investment grade for inclusion in this category.

Benchmark: Bloomberg Global Aggregate (CAD Hedged) Index

# Portfolio characteristics

## Key rate duration exposure



	Portfolio (yrs)	
	31 Dec '23	31 Mar '24
0-3 yrs	1.11	1.11
3-10 yrs	2.27	2.34
10+ yrs	1.26	1.18
<b>Total</b>	<b>4.64</b>	<b>4.63</b>

## Quality exposure (MV%)

	Portfolio	
	31 Dec '23	31 Mar '24
A1/P1	6.68	4.74
AAA	52.08	55.80
AA	9.16	8.72
A	9.11	8.62
Below A1/P1	0.21	0.03
BAA	11.53	11.88
BB	4.49	3.17
B	1.96	2.50
Below B	4.78	4.55
<b>Total</b>	<b>100</b>	<b>100</b>

## Interest rate exposure

	Portfolio (yrs)	
	31 Dec '23	31 Mar '24
Effective duration	4.65	4.63
Bull market duration	4.52	4.31
Bear market duration	5.02	4.84
<b>Spread duration</b>		
Mortgage spread duration	2.35	2.43
Corporate spread duration	1.44	1.57
Emerging markets spread duration	0.16	0.16
Swap spread duration	-1.05	-1.38
Covered bond spread duration	0.03	0.01
Sovereign related spread duration	0.90	0.90



# Country exposure

Country exposure by country of risk

	31 Dec '23		31 Mar '24	
	% of Market value	Duration (yrs)	% of Market value	Duration (yrs)
<b>United States</b>	<b>70.47</b>	<b>2.52</b>	<b>71.80</b>	<b>2.45</b>
<b>Japan</b>	<b>4.59</b>	<b>-0.04</b>	<b>0.73</b>	<b>-0.04</b>
<b>Eurozone</b>	<b>10.38</b>	<b>0.08</b>	<b>8.89</b>	<b>0.07</b>
Austria	0.02	0.00	0.00	0.00
Belgium	0.03	0.00	0.05	0.00
Euro Currency	4.38	0.00	2.75	-0.03
Finland	0.06	0.00	0.02	0.00
France	1.32	0.00	1.55	0.01
Germany	0.18	-0.01	0.35	-0.00
Greece	0.05	0.00	0.04	0.00
Ireland	2.42	0.00	2.26	0.00
Italy	0.41	0.01	0.35	0.01
Luxembourg	0.69	0.01	0.56	0.01
Netherlands	0.47	0.03	0.53	0.04
Portugal	0.09	0.00	0.02	0.00
Slovenia	0.02	0.00	0.00	0.00
Spain	0.25	0.02	0.43	0.03
<b>United Kingdom</b>	<b>8.06</b>	<b>0.16</b>	<b>8.54</b>	<b>0.20</b>
<b>Europe non-EMU</b>	<b>1.33</b>	<b>0.06</b>	<b>1.43</b>	<b>0.06</b>
Czech Republic	0.06	0.00	0.02	0.00
Denmark	0.64	0.02	0.40	0.01
Norway	-0.56	-0.02	0.00	0.00
Poland	0.11	0.00	0.13	0.01
Sweden	0.04	0.00	0.02	0.00
Switzerland	1.03	0.05	0.85	0.04
<b>Dollar Block</b>	<b>44.87</b>	<b>1.76</b>	<b>48.43</b>	<b>1.77</b>
Australia	3.32	0.17	3.18	0.16
Canada	41.20	1.58	44.79	1.59
New Zealand	0.35	0.01	0.47	0.02
<b>Other Industrialized Countries</b>	<b>0.78</b>	<b>0.04</b>	<b>0.46</b>	<b>0.02</b>
Bermuda	0.08	0.00	0.09	0.00
Cayman Islands	0.01	0.00	0.01	0.00
Chile	0.02	0.00	0.03	0.00
Israel	0.10	0.00	0.28	0.01
Macao	0.23	0.01	0.19	0.00
Puerto Rico	0.07	0.00	0.07	0.00
Saudi Arabia	0.20	0.02	0.21	0.02
Singapore	-0.21	-0.01	-0.48	-0.02
South Korea	0.19	0.01	-0.06	0.00
State of Qatar	0.05	0.00	0.07	0.00
Taiwan	-0.01	-0.00	0.00	-0.00

# Country exposure

Country exposure by country of risk

	31 Dec '23		31 Mar '24	
	% of Market value	Duration (yrs)	% of Market value	Duration (yrs)
United Arab Emirates	0.04	0.00	0.04	0.00
<b>EM - Asia</b>	<b>-1.34</b>	<b>-0.06</b>	<b>-0.73</b>	<b>-0.03</b>
China	-0.95	-0.04	-0.42	-0.02
India	-0.05	-0.00	0.30	0.01
Indonesia	-0.00	0.00	-0.00	0.00
Malaysia	-0.34	-0.01	-0.27	-0.01
Thailand	0.00	0.00	-0.34	-0.02
<b>EM - Latin America</b>	<b>2.71</b>	<b>0.07</b>	<b>3.09</b>	<b>0.07</b>
Argentina	0.27	0.01	0.32	0.01
Brazil	1.24	0.03	1.56	0.02
Colombia	0.25	-0.00	0.24	-0.00
Mexico	0.84	0.04	0.89	0.04
Peru	0.08	0.00	0.05	0.00
Venezuela	0.04	0.00	0.03	0.00
<b>EM - CEEMEA</b>	<b>2.54</b>	<b>0.06</b>	<b>2.18</b>	<b>0.06</b>
Cote d'Ivoire	0.06	0.00	0.00	0.00
Hungary	0.23	0.00	0.03	0.00
Romania	0.24	0.02	0.30	0.02
Russia	0.46	0.00	0.42	0.00
Serbia & Montenegro	0.01	0.00	0.01	0.00
South Africa	1.00	0.03	0.91	0.02
Turkey	0.54	0.01	0.51	0.01
<b>EM - Other</b>	<b>0.88</b>	<b>-0.00</b>	<b>0.84</b>	<b>-0.00</b>
EM Index Product	0.88	-0.00	0.84	-0.00
<b>Liabilities</b>	<b>-45.26</b>	<b>0.00</b>	<b>-45.68</b>	<b>0.00</b>
<b>Total</b>	<b>100</b>	<b>4.65</b>	<b>100</b>	<b>4.63</b>

# Additional series unit performance

PIMCO Managed Core Bond Pool (net of fees performance)

Performance periods ended: 31 Mar '24	MER*	Management Fee**	NAV currency	Class Inception date	3 mos.	6 mos.	1 yr.	3 yrs.	SI
Series ETF	0.660	0.590	CAD	14 Feb '20	0.59	7.06	5.59	0.20	0.70
Series A	1.190	1.090	CAD	14 Feb '20	0.46	6.77	5.02	-0.34	0.17
Series F	0.640	0.590	CAD	14 Feb '20	0.60	7.07	5.60	0.21	0.72
Series A - USD Hedged	1.190	1.090	USD	23 Dec '20	0.62	7.19	5.81	0.03	-0.47
Series F - USD Hedged	0.630	0.590	USD	23 Dec '20	0.75	7.48	6.39	0.59	0.08
Bloomberg Global Aggregate (CAD Hedged) Index	-	-	-	-	-0.14	5.52	3.33	-1.70	-1.02
Bloomberg Global Aggregate (USD Hedged) Index	-	-	-	-	0.01	6.00	4.14	-1.29	0.00

\*As of 31/12/2023. Management expense ratio is based on total expenses which includes the Management Fee (excluding commissions and other portfolio transaction costs) for the stated period and is expressed as an annualized percentage of daily average net asset value during the period.

\*\*The Annual Management Fee is used to pay for investment management services and general administration of the fund, this fee does not include taxes.

*Commissions, trailing commissions, management fees and expenses all may be associated with mutual fund investments. Please read the prospectus before investing. The indicated rates of return are the historical annual compounded total returns including changes in unit value and reinvestment of all dividends and does not take into account sales, redemption, distribution or optional charges or income taxes payable by any security holder that would have reduced returns. Mutual funds are not guaranteed, their values change frequently and past performance may not be repeated.*

Funds typically offer different series, which are subject to different fees and expenses (which may affect performance), having different minimum investment requirements and are entitled to different services.

# Important Disclosures

---

*No offering is being made by this material. Interested investors should obtain a copy of the prospectus, which is available on [pimco.ca](http://pimco.ca) or from your Financial Advisor.*

**Past performance is not a guarantee or a reliable indicator of future results.** Past performance is not a guarantee or a reliable indicator of future results. The performance figures presented reflect the total return performance and reflect changes in unit price and reinvestment of dividend and capital gain distributions. All periods longer than one year are annualized. Funds typically offer different series, which are subject to different fees and expenses (which may affect performance), having different minimum investment requirements and are entitled to different services.

There is no assurance that any fund, including any fund that has experienced **high or unusual performance** for one or more periods, will experience similar levels of performance in the future. High performance is defined as a significant increase in either 1) a fund's total return in excess of that of the fund's benchmark between reporting periods or 2) a fund's total return in excess of the fund's historical returns between reporting periods. Unusual performance is defined as a significant change in a fund's performance as compared to one or more previous reporting periods.

Differences in the Fund's performance versus the index and related attribution information with respect to particular categories of securities or individual positions may be attributable, in part, to differences in the pricing methodologies used by the Fund and the index.

Investments made by a Fund and the results achieved by a Fund are not expected to be the same as those made by any other PIMCO-advised Fund, including those with a similar name, investment objective or policies. A new or smaller Fund's performance may not represent how the Fund is expected to or may perform in the long-term. New Funds have limited operating histories for investors to evaluate and new and smaller Funds may not attract sufficient assets to achieve investment and trading efficiencies. A Fund may be forced to sell a comparatively large portion of its portfolio to meet significant unitholder redemptions for cash, or hold a comparatively large portion of its portfolio in cash due to significant unit purchases for cash, in each case when the Fund otherwise would not seek to do so, which may adversely affect performance.

For instance, during periods of low or declining interest rates, the Fund's distributable income and dividend levels may decline for many reasons. For example, the Fund may have to deploy uninvested assets (whether from purchases of Fund units, proceeds from matured, traded or called debt obligations or other sources) in new, lower yielding instruments. Additionally, payments from certain instruments that may be held by the Fund (such as variable and floating rate securities) may be negatively impacted by declining interest rates, which may also lead to a decline in the Fund's distributable income and dividend levels.

**Yield to Maturity (YTM)** is the estimated total return of a bond if held to maturity. YTM accounts for the present value of a bond's future coupon payments. PIMCO calculates a Fund's Estimated YTM by averaging the YTM of each security held in the Fund on a market-weighted basis. PIMCO pulls each security's YTM from PIMCO's Portfolio Analytics database. In general, the calculation will incorporate the yield based on the notional value of all derivative instruments held by a Fund. The measure does not reflect the deduction of fees and expenses and is not necessarily indicative of the Fund's actual performance. A portfolio's actual yield or distribution rate may be significantly lower than its estimated YTM in practice. Also, estimated YTM is not intended to indicate that a portfolio will actually hold any or all of its portfolio securities to maturity in practice, and various securities may be sold or otherwise disposed of prior to maturity. Estimated YTM is not a projection or prediction of the actual yield or return that a portfolio may achieve or any other future performance results. There can be no assurance that a portfolio will achieve any particular level of yield or return and actual results may vary significantly from estimated YTM.

**A word about risk: The Fund invests in other PIMCO funds and performance is subject to underlying investment weightings which will vary.** Investing in the **bond market** is subject to risks, including market, interest rate, issuer, credit, inflation risk, and liquidity risk. The value of most bonds and bond strategies are impacted by changes in interest rates. Bonds and bond strategies with longer durations tend to be more sensitive and volatile than those with shorter durations; bond prices generally fall as interest rates rise, and low interest rate environments increase this risk. Reductions in bond counterparty capacity may contribute to decreased market liquidity and increased price volatility. Bond investments may be worth more or less than the original cost when redeemed. Investing in **foreign denominated and/or domiciled securities** may involve heightened risk due to currency fluctuations, and economic and political risks, which may be enhanced in emerging markets. **Mortgage and asset-backed securities** may be sensitive to changes in interest rates, subject to early repayment risk, and their value may fluctuate in response to the market's perception of issuer creditworthiness; while generally supported by some form of government or private guarantee there is no assurance that private guarantors will meet their obligations. **High-yield, lowerrated, securities** involve greater risk than higher-rated securities; portfolios that invest in them may be subject to greater levels of credit and liquidity risk than portfolios that do not. **Equities** may decline in value due to both real and perceived general market, economic, and industry conditions. **Derivatives** may involve certain costs and risks such as liquidity, interest rate, market, credit, management and the risk that a position could not be closed when most advantageous. Investing in derivatives could lose more than the amount invested. **The cost of investing in the Fund will generally be higher than the cost of investing in a fund that invests directly in individual stocks and bonds. Diversification does not ensure against loss.**

# Important Disclosures

---

Statements concerning financial market trends or portfolio strategies are based on current market conditions, which will fluctuate. There is no guarantee that these investment strategies will work under all market conditions or are appropriate for all investors and each investor should evaluate their ability to invest for the long term, especially during periods of downturn in the market. Outlook and strategies are subject to change without notice.

Forecasts, estimates and certain information contained herein are based upon proprietary research and should not be interpreted as investment advice, as an offer or solicitation, nor as the purchase or sale of any financial instrument. Forecasts and estimates have certain inherent limitations, and unlike an actual performance record, do not reflect actual trading, liquidity constraints, fees, and/or other costs. In addition, references to future results should not be construed as an estimate or promise of results that a client portfolio may achieve.

Portfolio structure is subject to change without notice and may not be representative of current or future allocations.

Differences in the Fund's performance versus the FTSE Canada Universe Bond Index (the "Index") and related attribution information with respect to categories of securities or individual positions may be attributable, in part, to differences in the pricing methodologies used by the Fund and the Index.

Bloomberg Global Aggregate (CAD Hedged) Index provides a broad-based measure of the global investment-grade fixed income markets. The three major components of this index are the U.S. Aggregate, the Pan-European Aggregate, and the Asian-Pacific Aggregate Indices. The index also includes Eurodollar and Euro-Yen corporate bonds, Canadian Government securities, and USD investment grade 144A securities. It is not possible to invest directly in an unmanaged index.

*The products and services provided by PIMCO Canada Corp. may only be available in certain provinces or territories of Canada and only through dealers authorized for that purpose. PIMCO Canada has retained PIMCO LLC as sub-advisor. PIMCO Canada will remain responsible for any loss that arises out of the failure of its sub-advisor.*

PIMCO as a general matter provides services to qualified institutions, financial intermediaries and institutional investors. Individual investors should contact their own financial professional to determine the most appropriate investment options for their financial situation. This material contains the current opinions of the manager and such opinions are subject to change without notice. This material has been distributed for informational purposes only and should not be considered as investment advice or a recommendation of any particular security, strategy or investment product. Information contained herein has been obtained from sources believed to be reliable, but not guaranteed. No part of this material may be reproduced in any form, or referred to in any other publication, without express written permission. PIMCO is a trademark of Allianz Asset Management of America LLC in the United States and throughout the world. **PIMCO Canada Corp.** 199 Bay Street, Suite 2050 Commerce Court Station P.O. Box 363 Toronto, ON M5L 1G2 416-368-3350 ©2024 PIMCO.

# Important Disclosures

Acronyms and definitions of investment terms used throughout the report:

**Alpha** is a measure of performance on a risk-adjusted basis calculated by comparing the volatility (price risk) of a portfolio vs. its risk-adjusted performance to a benchmark index; the excess return relative to the benchmark is alpha.

**Average coupon** is the average of the coupon payments of the underlying bonds within the portfolio.

**Average effective maturity** is a weighted average of all the maturities of the bonds in a portfolio, computed by weighting each bond's effective maturity by the market value of the security.

**"Bend-but-not-break"** refers to credits that PIMCO would not expect to default in a credit-stressed environment.

**Beta** is a measure of price sensitivity to market movements. Market beta is 1.

**Breakeven inflation rate** (or expectation) is a market-based measure of expected inflation or the difference between the yield of a nominal and an inflation-linked bond of the same maturity.

**Carry** is the rate of interest earned by holding the respective securities.

The terms **"cheap" and "rich"** as used herein generally refer to a security or asset class that is deemed to be substantially under- or overpriced compared to both its historical average as well as to the investment manager's future expectations. There is no guarantee of future results or that a security's valuation will ensure a profit or protect against a loss.

**CPI** is the Consumer Price Index.

The **credit quality** of a particular security or group of securities does not ensure the stability or safety of an overall portfolio. The quality ratings of individual issues/issuers are provided to indicate the credit-worthiness of such issues/issuer and generally range from AAA, Aaa, or AAA (highest) to D, C, or D (lowest) for S&P, Moody's, and Fitch respectively.

**Dividend yield** is represented by the weighted average coupon divided by the weighted average price.

**Duration** is the measure of a bond's price sensitivity to interest rates and is expressed in years.

**Effective duration** is the duration for a bond with an embedded option when the value is calculated to include the expected change in cash flow caused by the option as interest rates change.

**Forward curve** is a function graph that defines the prices at which a contract for future delivery or payment can be concluded today.

**Fallen angel** is a bond that was initially given an investment grade rating but has since been reduced to below investment grade status.

**GFC** is the Global Financial Crisis.

**Information ratio** is a ratio of portfolio returns above the returns of a benchmark to the volatility of those returns.

**Like-duration Securities** are calculated by the index provider by comparing the index return to a hypothetical matched position in the security.

**LNG** is Liquefied Natural Gas.

The **Option Adjusted Spread (OAS)** measures the spread over a variety of possible interest rate paths. A security's OAS is the average return an investor will earn over Treasury returns, taking all possible future interest rate scenarios into account. The OAS is the net spread over the swap curve that will on average be earned if the security is held to maturity.

**Rising star** is the term given to a bond that was rated high yield but has since been upgraded to investment grade.

**"Risk assets"** are any financial security or instrument that are likely to fluctuate in price.

**Risk premia** is the return in excess of the risk-free rate of return an investment is expected to yield.

**Roll yield** is the yield that a futures investor captures as their long position in a futures contract converges to the spot price.

**"Safe haven"** is an investment that is expected to retain or increase in value during times of market turbulence.

**"Safe Spread"** is defined as sectors that we believe are most likely to withstand the vicissitudes of a wide range of possible economic scenarios. All investments contain risk and may lose value.

The **SEC yield** is an annualized yield based on the most recent 30 day period. The subsidized yield includes contractual expense reimbursements and it would be lower without those reimbursements. The

**Unsubsidized 30 day SEC Yield** excludes contractual expense reimbursements.

**Tracking error** measures the dispersion or volatility of excess returns relative to a benchmark.

To relate the price sensitivity of ILBs to changes in nominal yields, yield beta is applied to nominal changes to arrive at a price sensitivity of ILBs to changes in nominal rates. A **yield beta** of 0.90 implies that if nominal yields move 100 basis points, real yields will move 90 basis points. ILBs with long maturity may respond differently to changes in nominal rates than shorter maturity ILBs.

The distribution yield for monthly paying Funds is calculated by annualizing actual dividends distributed for the monthly period ended on the date shown and dividing by the net asset value on the last business day for the same period. The distribution yield for quarterly paying Funds is calculated by taking the average of the prior four quarterly distribution yields. The quarterly distribution yields are calculated by annualizing actual dividends distributed for the quarterly period ended on the most recent quarterly distribution date and dividing by the net asset value for the same date. The yield does not include long- or short-term capital gains distributions.

Asset-Backed Security (ABS); Bank of England (BOE); Bank of Japan (BOJ); Breakeven Inflation (BEI); Collateralized Debt Obligation (CDO); Collateralized Loan Obligation (CLO); Commercial Mortgage-Backed Security (CMBS); Developed Markets (DM); Emerging Markets (EM); Federal Reserve Board (The Fed); Europe Central Bank (ECB); Federal Open Market Committee (FOMC); Foreign Exchange (FX); Gross Domestic Product (GDP); Gulf Cooperation Council (GCC); High Yield (HY); Inflation-Linked Bond (ILS); Investment Grade (IG); Leveraged-buyout (LBO); Loan-to-Value (LTV); Master Limited Partnership (MLP); Mortgage-Backed Security (MBS); Market Weighted Spread (MWS); Real Estate Investment Trust (REIT); Residential Mortgage-Backed Security (RMBS); Treasury Inflation-Protected Security (TIPS); Year-over-Year (YoY)